

The Complete Guide to
Installing
CleanClad // 

Copyright © CleanClad Published 2017



CleanClad // 
Tel: 0333 456 6708

INTRODUCTION

Investing in **CleanClad** Hygienic Wall Cladding is a smart move. It will help you maintain all-important hygiene standards and transform any space into a modern, fresh environment.

Because we only sell high quality PVC cladding products, we want to help you ensure your installation methods match professional standards. For best results, follow this guide. If you have got any questions, contact a member of our friendly customer care team for free, no obligation advice.

This guide will talk you through the following processes, offering a step-by-step approach to getting a professional result:



Preparation - the things you need to get right before you start, from ensuring walls are clean and dust free to making sure you have got the right tools



Profiles and Trims - knowing what to use, where and when



Measuring Walls - avoid costly mistakes and wastage with our important guide to measuring surfaces



Cutting PVC Sheet - where to place your sheet ready for the cutting process, what tools you will need and how to cut



Adhesives - application methods

Installation - applying cladding to your walls



Finishing Touches - how to give your installation a professional finish



Cleaning & Maintaining CleanClad - the simple way to keep your cladding really clean and looking great

Before You Get Started

Preparation

Preparation is an important part of the installation process and should never be overlooked. Failing to carry out vital preparation work can impact on the overall quality of the installation and lessen its effectiveness.

Ready to start?

1. Ensure the surface of every wall is dust-free. Check for any areas of moisture or damp and deal with them before proceeding any further. Sand down any bumps, fill holes or indentations and remove any objects that may be protruding from the wall, such as nails.

2. Check you have got the right tools and cladding accessories to hand. Will you need any of the following? Get them ready.

Plastic rivets
Adhesive
Sealant
Rubber Mallet
H Sections
Profiles / Trims
Roller



Have you got the right tools and accessories to complete the job?



CleanClad™
Tel: 0333 456 6708

H Sections & Starter Trims

H Sections 1 and 2 Parts



Correct positioning should start with measuring and marking the area to be cladded

If you are installing a hygienic floor covering as part of the cladding process, use one of our single or 2-part H Sections. They should be positioned 100mm off the floor to properly meet your sheets. The easiest - and most accurate - way to get started is to mark one point and then use a spirit level to follow the same height around the room/space, marking as you go.

Starter Trims

If you are not installing new flooring as part of your wall cladding project, you will need CleanClad starter trims, sometimes referred to as simply 'J' trims. They should be positioned on the floor at the bottom of the wall. Before proceeding, check that your floor is level. If it isn't, you may need to take this into account when cutting your PVC cladding sheets.

Measuring Walls & Cutting PVC Sheet

Measuring Walls



Great care must be taken when measuring the areas to be covered with CleanClad's hygienic PVC sheet. You will need to know exactly where each sheet will start and end, and you should take into account any corners or curves. Again, use a spirit level to check walls. If you need to cut your PVC sheet to suit corners and curves, make accurate markings before attempting any cuts. Measuring and marking in this way prevents wastage and ensures a proper fit.



Cutting PVC Sheet



Cut CleanClad hygienic wall cladding when it is laid out flat. Once you are sure you have marked down the right dimensions, use a jigsaw fitted with a PVC cutting blade or a pair of aviator snips to make slow, accurate cuts. Tip: Be sure to pay careful attention to the protective backing on the sheets - peel them away very slightly from the surface of the cladding around cuts and the edges to make removing them easier later on.

Using Adhesives

Tip: Before applying the first cladding sheet to a wall, hold it up to the target area and double check that you have cut it to the right size. Once you are satisfied you have you measured and cut correctly, it is time to apply one of our adhesives.



Using our 310ml Tube of Wall Cladding Adhesive

Allow 1 tube per 8ft x 4ft sheet. It will provide a secure, long-lasting grip, if you follow these instructions: Prime the wall with PVA at least 24 hours prior to installation. If applying to block work/tiles, ensure the top layer of glaze is removed to ensure a firm grip. Apply generously in beading to the wall, firstly around the edges of your marked out sheet section and then in diagonal lines with gaps of 50mm. Alternate the direction of the lines as you go. We recommend each diagonal line should extend to 400mm.



Using our 6.5L Tub of Hybrid 2-Part Wall Cladding Adhesive

This adhesive must be mixed prior to application. (Full instructions are on the tub.) It easily bonds to most surfaces, offering a secure, long-lasting seal. Prime the wall with PVA at least 24 hours prior to installation. If applying to block work/tiles, ensure the top layer of glaze is removed to ensure a firm grip. Using a trowel, preferably a notched trowel or similar, spread the mixture over the back of the sheet taking care to ensure it is distributed evenly. This adhesive dries quickly so install the sheet straight away.

Installation

Continue installing your hygienic PVC cladding, as described opposite - following the adhesive, installation and 2-part H section advice outlined. When you reach a corner, follow the next set of instructions:

CleanClad stocks an extensive range of internal and external corners in 25mm x 25mm, 38mm x 38mm and 50mm x 50mm. The 50mm x 50mm corner gives you more room to play with if your sheets aren't cut exactly to the size of the corner. Just cut the corner to fit the space and glue in place with a generous, even application of adhesive. For smaller corners, cut to size and clip them to your sheet/s using glue to ensure a fully bonded fit on all sides.

Where cladding is not required, or is only needed for part of a wall, use a vertical 'J', or edging strip, and clip it firmly to the cladding sheet.

Once you are satisfied you have installed your PVC wall cladding properly and that you have left 2 to 3mm expansion gaps, as outlined, use H fronts to cover the 2-part H section backs. Simply press them into place.

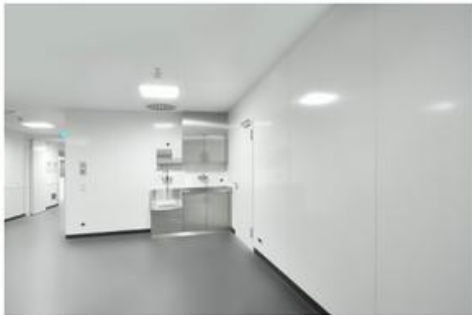
Insert your sheets into either the starter trim or one part H section. You may need someone to help you while you get the alignment right. When the sheet is properly slotted into the starter trip or H section, you can press it against the wall. To keep the PVC sheet straight during this important step, we recommend you start at the bottom and work your way up. When you are confident the adhesive has gripped the sheet to the wall, and you can see it is properly aligned, use a roller (as described in the list of tools) to rub over the surface of the cladding to ensure the adhesive has spread correctly to provide a total bond.

Installing 2-part H Sections

Before you bond your first cladding sheet to a wall, you need to install CleanClad's back part of the two-part H section or joining strip. Once you place your sheet on the wall then you can slip in the top part of the 2-part section. Every care must be taken to ensure you leave a 2 to 3mm gap between the H section and edge of your PVC sheet. This is because fluctuations in temperature cause PVC to expand and contract. In a hot environment, PVC products can expand by 1mm every time the temperature rises by 10 degrees C. Failing to leave an adequate gap will cause your cladding to buckle and force it away from the wall.

Finishing Touches & Maintenance

Finishing Touches



Now that you have installed your CleanClad PVC sheet, you can remove protective backing from all products used. Give surfaces a wipe over to remove any excess adhesive or dirt.

Use our specialist sealant to fill any gaps and to give your project a really professional finish. Full instructions on how to use the sealant is supplied with the product.

Once you have completed all of these steps, you can now, if desired, install our PVC skirting.

Looking after your
CleanClad wall
cladding is
effortless

Cleaning and Maintaining CleanClad

Spray surfaces with a mild detergent and wipe over with a damp cloth. Allow to dry, then spray the surfaces with a sanitiser. Allow to air dry.